

ALTO®

Total Cleaning
Confidence™

(D)	Wichtige Sicherheitshinweise	2
(GB)	Important safety notes	4
(F)	Consignes de sécurité importantes	6
(NL)	Belangrijke veiligheidsinstructies	8
(I)	Avvertenze importanti per la sicurezza ...	10
(N)	Viktige sikkerhetsinstrukser	12
(S)	Viktiga säkerhetsanvisningar	14
(DK)	Vigtige sikkerhedshenvisninger	16
(SF)	Tärkeitä turvallisuusohjeita	18
(SLO)	Pomembni varnostni predpisi	20
(HR)	Važne sigurnosne upute	22
(SK)	Dôležité bezpečnostné upozornenia	24
(CZ)	Důležitá bezpečnostní upozornění	26
(PL)	Ważne wskazówki bezpieczeństwa	28
(H)	Fontos biztonsági útmutatások	30
(E)	Avisos de seguridad importantes	32
(P)	Avisos de segurança importantes	34
(GR)	Σημαντικές υποδείξεις ασφάλειας	36
(TR)	Önemli güvenlik bilgileri	38

WAP

TECHNOLOGY



FOR YOUR OWN SAFETY

Before putting the cleaner into operation, be sure to also read the enclosed operating instructions thoroughly and keep them close at hand for future reference.

The cleaner may only be used by persons trained in its use and expressly authorised to use it.

GENERAL

Operation of this cleaner is subject to the applicable national regulations.

In addition to these operating instructions and the binding regulations on accident prevention applicable in the country of use, the generally acknowledged technical rules for safe and correct working must also be observed.

Any method of work endangering health or safety is forbidden!

HEALTH-ENDANGERING DUSTS *)

This cleaner is not suitable for picking up health-endangering dusts.

FIRE AND EXPLOSION HAZARD



The following materials must not be picked up with the cleaner:

- Hot materials (glowing cigarettes, hot ashes, etc.)
- Inflammable, explosive or aggressive fluids (e.g. petrol, solvents, acids, alkalines, etc.)
- Inflammable, explosive dusts (e.g. magnesium or aluminium dust, etc.).

APPLIANCE PLUG SOCKET

Before connecting any appliance to the appliance plug socket, the cleaner must always be switched off.

If appliances are connected to the appliance plug socket, ensure that these appliances are also switched off when being connected to the appliance plug socket.

CAUTION!

The operating instructions and the safety precautions contained therein must be observed when using appliances connected to the appliance plug socket of the cleaner.

USING FOR THE FIRST TIME

Before using the cleaner for the first time, check that it is in a good and safe condition.

Plugs and connectors of mains leads must be at least splash water-proof. Check the mains connection and mains plug.

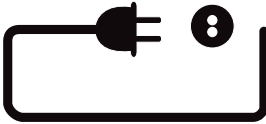
Inspect the mains lead at regular intervals for damage or signs of ageing. Use the cleaner only when the mains lead is in a good and safe condition.

(Damaged mains leads present a danger of electric shocks!)

Use the cleaner only with an undamaged filter element.

DURING OPERATION

Take care not to damage the mains lead (e.g. by driving over, pinching or dragging). Pull out the mains plug only directly at the plug, i.e. not by pulling at the mains lead.



Before picking up liquids, the filter bag must be removed and the function of the float switch checked.

If foaming is observed, stop work immediately and empty the tank.

MAINTENANCE AND REPAIR

CAUTION!
Before cleaning and servicing the cleaner, always remove the mains plug.

Carry out only maintenance operations described in these operating instructions. Use only original Wap spare parts.

Do not make any technical modifications to the cleaner.

CAUTION!
Your safety could be endangered as a result!

For all other maintenance and repair work, please contact the Wap Service department or an authorised specialist workshop!

ELECTRICAL EQUIPMENT

Check the rated voltage of the cleaner before connecting it to the mains power supply. Ensure that the voltage specified on the rating plate corresponds to the local mains voltage.

When connected to the mains power supply with a mains lead of type H 07 RN-F 3G 1.5 mm², the cleaner may also be used outdoors.

When using an extension lead or replacing the mains lead, the lead type specified by the manufacturer must always be used.

We recommend that the power supply to the cleaner be connected via an earth-leakage circuit breaker which interrupts the power supply either if the earth leakage current exceeds 30 mA for 30 ms, or it contains an earthing test current circuit.

When using an extension lead, observe the minimum cross-sections of the leads:

Cable length m	Cross-section mm ²
up to 20	1.5
20 to 50	2.5

Always arrange the current-carrying parts (plug sockets, plugs and connectors) and lay extension leads so that the protection class of the cleaner is maintained.

CAUTION!
Never spray the top section of the cleaner with water: Danger for persons, danger of short circuits.

The latest edition of the IEC Regulations must be observed.



INTERNET
<http://www.alto-online.com>

ALTO HEADQUARTERS

Incentive International A/S
Kongens Nytorv 28
P.O.Box 2064
1013 Copenhagen K
Tel.: +45 33 11 11 42
Fax: +45 33 93 46 36
E-mail: incentive@incentive-dk.com

SUBSIDIARIES

AUSTRALIA

ALTO Overseas Inc.
1B/8 Resolution Drive
P.O.Box 797
Caringbah, N.S.W.2229
Tel.: +61 2 95 24 61 22
Fax: +61 2 95 24 52 56

AUSTRIA

ALTO Österreich GmbH
Metzgerstr. 68
5101 Bergheim/Salzburg
Tel.: +43 6624 5 64 00-14
Fax: +43 6624 5 64 00-55
E-mail: wap@salzburg.co.at

BRAZIL

Wap do Brasil Ltda.
Rua 25 de Agosto, 608
83323-260 Pinhais/Paraná
Tel.: +55 4 16 67 40 26
Fax: +55 4 16 67 47 99
E-mail: wap@wapltda.com.br

CANADA

ALTO Canada
24 Constellation Road
Rexdale
Ontario M9W 1K1
Tel.: +1 416 6 75 58 30
Fax: +1 416 6 75 69 89

CROATIA

Wap ALTO Strojeveri za čišćenje, d.o.o.
Siget 18a
10020 Zagreb
Tel.: +385 1 65 54 144
Fax: +385 1 65 54 112
E-mail: admin.wap@wap-sistemi.hr

CZECH REPUBLIC

ALTO Česká Republika s.r.o.
Zateckých 9
14000 Praha 4
Tel.: +420 2 41 40 84 19
Fax: +420 2 41 40 84 39
E-mail: wap_p@mbox.vol.cz
Web: www.wap-alto.cz

DENMARK

ALTO Danmark A/S
Industrikvarteret
9560 Hadsund
Tel.: +45 7218 21 00
Fax: +45 7218 21 05
E-mail: salg@alto-dk.com

ALTO Danmark A/S (food division)
Blytækkervej 2
9000 Aalborg
Tel.: +45 7218 21 00
Fax: +45 7218 20 99
E-mail: scanio.technology@alto-dk.com

FRANCE

ALTO France S.A.
B.P. 44, 4 Place d'Ostwald
67036 Strasbourg Cedex 2
Tel.: +33 3 88 28 84 00
Fax: +33 3 88 30 05 00
E-mail: info@alto-fr.com

GERMANY

Wap ALTO Group
ALTO Deutschland GmbH
Guido-Oberdorfer-Straße 5-8
89287 Bellenberg
Tel.: +49 0180 5 37 37 37
Fax: +49 0180 5 37 37 38
E-mail: info@wap-online.de

GREAT BRITAIN

ALTO Cleaning Systems
(UK) Ltd.
Bowerbank Way
Guido-Oberdorfer Estate, Penrith
Cumbria CA11 9BN
Tel.: +44 1 7 68 86 89 95
Fax: +44 1 7 68 86 47 13
E-mail: sales@alto-uk.com

JAPAN

ALTO Danmark A/S Japan
Representative Office
5-2, Sakyo 1-Chome
631-0801 Nara City
Tel.: +81 742 72 0555
Fax: +81 742 72 0555
E-mail: alto-jpn@nifty.com

NETHERLANDS

ALTO Nederland B.V.
Postbus 65
3370 AB Hardinxveld-
Giessendam
Tel.: +31 18 46 67 72 00
Fax +31 18 46 67 72 01
E-mail: info@alto-nl.com

NEW ZEALAND

ALTO Overseas Inc.
5A Tarnedale Grove
Albany Auckland
Tel.: +64 9 414 4520
Fax: +64 9 414 4521
E-mail: altonz@ihug.co.nz

NORWAY

ALTO Norge A/S
Bjørnerudveien 24
1266 Oslo
Tel.: +47 22 75 17 70
Fax: +47 22 75 17 71
E-mail: info@alto-no.com

SINGAPORE

ALTO DEN-SIN Singapore Pte Ltd.
No. 17 Link Road
Singapore 619034
Tel.: +65 2 68 10 06
Fax: +65 2 68 49 16
E-mail: densin@singnet.com.sg
Web: www.densin.com

SLOVENIA

Wap ALTO čistilni sistemi, d.o.o.
Letališka 33
SLO-1110 Ljubljana
Tel.: +368 15 24 23 42
Fax: +368 15 40 42 94
E-mail: wap.prodaja@siol.com

SLOWAKIA

Wap ALTO čistiace systémy s.r.o.
Remeselnícka 42
83106 Bratislava-Rača
Tel.: +421 2 44 881 402
Fax: +421 2 44 881 395
E-mail: wap@gtinet.sk
Web: www.wap-alto.sk

SPAIN

ALTO Iberica S.L.
Calle de la Majada No. 4
28760 Tres Cantos - Madrid
Tel.: +34 91 8 04 62 56
Fax: +34 91 8 04 64 63
E-mail: info@alto-es.com

SWEDEN

ALTO Sverige AB
Aminogatan 18
431 04 Mölndal
Tel.: +46 3 17 06 73 00
Fax: +46 3 17 06 73 41
E-mail: info@alto-se.com

USA

ALTO Cleaning Systems, Inc.
12249 Nations Ford Road
28134 Pineville
Tel.: +1 704 971 1240
Fax: +1 704 971 1241
E-mail: info@altocsi.com

ALTO U.S. Inc.
16253 Swingley Ridge Road, Suite 200
63017-1544 Chesterfield, Missouri
Tel.: +1 636 530 0871
Fax: +1 636 530 0872
E-mail: info@alto-us.com

ALTO U.S. Inc.
2100 Highway 265
72764 Springdale, Arkansas
Tel.: +1 479 750 1000
Fax: +1 479 756 0719
E-mail: info@alto-us.com

ALTO U.S. Inc.
1100 Haskins Road
43402 Bowling Green
Tel.: +1 419 352 75 11
Fax: +1 419 353 71 87
E-mail: info@alto-us.com

SB Station
SB Station Marathon
SB Tandem
SB Tandem Marathon

www.alto-online.com



ALTO[®]
Total Cleaning
Confidence[™]

(D)	<i>Betriebsanleitung</i>	2
(GB)	<i>Operating Instructions</i>	8
(F)	<i>Notice d'utilisation</i>	14
(NL)	<i>Gebruiksaanwijzing</i>	20
(I)	<i>Istruzioni sull'uso</i>	26
(N)	<i>Driftsinstruks</i>	32
(S)	<i>Bruksanvisning</i>	38
(DK)	<i>Driftsvejledning</i>	44
(SF)	<i>Käyttöohje</i>	50
(SLO)	<i>Navodilo za uporabo</i>	56
(HR)	<i>Uputstvo za rad</i>	62
(SK)	<i>Prevádzkový návod</i>	68
(CZ)	<i>Provozní návod</i>	74
(PL)	<i>Instrukcja obsługi</i>	80
(H)	<i>Kezelési utasítás</i>	86
(E)	<i>Instrucciones de manejo</i>	92
(P)	<i>Instruções de operação</i>	98
(GR)	<i>Οδηγίες λειτουργίας</i>	104
(TR)	<i>İşletme kılavuzu</i>	110

WAP
TECHNOLOGY



EG - Konformitätserklärung

Wap Reinigungssysteme GmbH & Co.
Guido-Oberdorfer-Straße 2-8
D-89287 Bellenberg

Erzeugnis:**SB SaugStation****Type:**SB Station, SB Station Marathon
SB Tandem, SB Tandem Marathon**Beschreibung:**

230 V~, 50 Hz

Die Bauart des Gerätes entspricht folgenden einschlägigen Bestimmungen:EG-Maschinenrichtlinie 98/37/EG
EG-Niederspannungsrichtlinie 73/23/EG
EG-Richtlinie EMV 89/336/EG**Angewendete harmonisierte Normen:**EN 292
EN 60335-1 und 60335-1 A6
EN 60335-2-69
EN 55014-1, EN 55014-2, EN 61000-3-2**Angewendete nationale Normen und technische Spezifikationen:**DIN EN 60335-1
IEC 60335-2-69ppa. Rau, Dipl. Ing. (FH)
Leitung Forschung und Entwicklung

Bellenberg, 23.06.1999



Déclaration de conformité CE

Wap Reinigungssysteme GmbH & Co.
Guido-Oberdorfer-Straße 2-8
D-89287 Bellenberg

Produit:**Aspirateur****Type:**SB Station, SB Station Marathon
SB Tandem, SB Tandem Marathon**Description:**

230 V~, 50 Hz

La construction de l'appareil est conforme aux réglementations afférentes suivantes:Directive CE relative aux machines 98/37/EG
Directive CE relative à basse tension 73/23/EG
Directive CE EMV 89/336/EG**Normes harmonisées appliquées:**EN 292
EN 60335-1, 60335-1 A6
EN 60335-2-69
EN 55014-1, EN 55014-2, EN 61000-3-2**Normes nationales et spécifications techniques appliquées:**DIN EN 60335-1
IEC 60335-2-69ppa. Rau, Dipl. Ing. (FH)
Direction Recherche et Développement

Bellenberg, 23.06.1999



EU Declaration of Conformity

Wap Reinigungssysteme GmbH & Co.
Guido-Oberdorfer-Straße 2-8
D-89287 Bellenberg

Product:**Self Service Vacuum Cleaner****Type:**SB Station, SB Station Marathon
SB Tandem, SB Tandem Marathon**Description:**

230 V~, 50 Hz

The design of the unit corresponds to the following pertinent regulations:EC Machine Directive 98/37/EG
EC Low-voltage Directive 73/23/EG
EC EMV Directive 89/336/EG**Applied harmonised standards:**EN 292
EN 60335-1, 60335-1 A6
EN 60335-2-69
EN 55014-1, EN 55014-2, EN 61000-3-2**Applied national standards and technical specifications:**DIN EN 60335-1
IEC 60335-2-69ppa. Rau, Dipl. Ing. (FH)
Head of Research and Development

Bellenberg, 23.06.1999



Dichiarazione di conformità CE

Wap Reinigungssysteme GmbH & Co.
Guido-Oberdorfer-Straße 2-8
D-89287 Bellenberg

Prodotto:**Aspiratore****Tipo:**SB Station, SB Station Marathon
SB Tandem, SB Tandem Marathon**Description:**

230 V~, 50 Hz

La costruzione dell'apparecchio è conforme alle seguenti direttive specifiche:Direttiva CE sulle macchine 98/37/EG
Direttiva CE sulla bassa tensione 73/23/EG
Direttiva CE sulla compatibilità elettromagnetica 89/336/EG**Norme armonizzate applicate:**EN 292
EN 60335-1, 60335-1 A6
EN 60335-2-69
EN 55014-1, EN 55014-2, EN 61000-3-2**Norme nazionali applicate e specifiche tecniche:**DIN EN 60335-1
IEC 60335-2-69ppa. Rau, Dipl. Ing. (FH)
Direttore Ricerca e Sviluppo

Bellenberg, 23.06.1999



EG-Verklaring van overeenstemming

Wap Reinigungssysteme GmbH & Co.
Guido-Oberdorfer-Straße 2-8
D-89287 Bellenberg

Product:**SB SaugStation****Type:**SB Station, SB Station Marathon
SB Tandem, SB Tandem Marathon**Beschrijving:**

230 V~, 50 Hz

De constructie van het apparaat voldoet aan de volgende van toepassing zijnde voorschriften:EG-machinesrichtlijn 98/37/EG
EG-laagspanningsrichtlijn 73/23/EG
EG-richtlijn EMV 89/336/EG**Toegepaste geharmoniseerde normen:**EN 292
EN 60335-1, 60335-1 A6
EN 60335-2-69
EN 55014-1, EN 55014-2, EN 61000-3-2**Toegepaste nationale normen en technische specificaties:**DIN EN 60335-1
IEC 60335-2-69ppa. Rau, Dipl. Ing. (FH)
Chef onderzoek en ontwikkeling

Bellenberg, 23.06.1999



Atestado de conformidad de la UE

Wap Reinigungssysteme GmbH & Co.
Guido-Oberdorfer-Straße 2-8
D-89287 Bellenberg

Producto:**Aspirador****Modelo:**SB Station, SB Station Marathon
SB Tandem, SB Tandem Marathon**Descripción:**

230 V~, 50 Hz

La construcción de la máquina corresponde a las siguientes normas específicas:R. de la UE para máquinas 98/37/EG
R. de la UE para baja tensión 73/23/EG
R. de la UE para la compatibilidad electromagnética 89/336/EG**Normas armonizadas aplicadas:**EN 292
EN 60335-1, 60335-1 A6
EN 60335-2-69
EN 55014-1, EN 55014-2, EN 61000-3-2**Normas nacionales aplicadas y especificaciones técnicas:**DIN EN 60335-1
IEC 60335-2-69ppa. Rau, Dipl. Ing. (FH)
Director Investigación y Desarrollo

Bellenberg, 23.06.1999



Atestado de conformidade da UE

Wap Reinigungssysteme GmbH & Co.
Guido-Oberdorfer-Straße 2-8
D-89287 Bellenberg

Produto: Aspirador

Modelo: SB Station, SB Station Marathon
SB Tandem, SB Tandem Marathon

Descrição: 230 V~, 50 Hz

A construção da máquina corresponde às seguintes normas específicas: Directiva UE para máquinas 98/37/EG
Directiva UE para baixa tensão 73/23/EG
Directiva para a compatibilidade electromagnética 89/336/EG

Normas harmonizadas aplicadas: EN 292
EN 60335-1, 60335-1 A6
EN 60335-2-69
EN 55014-1, EN 55014-2, EN 61000-3-2

Normas nacionais aplicadas e especificações técnicas: DIN EN 60335-1
IEC 60335-2-69

Rau

ppa. Rau, Dipl. Ing. (FH)
Diretor de Pesquisas e Desenvolvimento

Bellenberg, 23.06.1999



Δήλωση αναπόκρισης EOK

Wap Reinigungssysteme GmbH & Co.
Guido-Oberdorfer-Straße 2-8
D-89287 Bellenberg

Πρόσόν: SB SaugStation

Τύπος: SB Station, SB Station Marathon
SB Tandem, SB Tandem Marathon

Περιγραφή: 230 V~, 50 Hz

Ο κατασκευαστικός τύπος της συσκευής αναποκρίνεται στους ακόλουθους σχετικούς κανονισμούς: Οδηγία περί μηχανών EOK 98/37/EOK
Οδηγία χρηστικών πινάκων EOK 73/23/EOK
Οδηγία περί ηλεκτρομαγνητικής συμβατότητας 89/336/EOK

Εφαρμοσθείσες εναρμονισμένες προδιαγραφές: EN 292
EN 60335-1, 60335-1 A6
EN 60335-2-69
EN 55014-1, EN 55014-2, EN 61000-3-2

Εφαρμοσθείσες εθνικές προδιαγραφές και τεχνικοί προσημορισμοί: DIN EN 60335-1
IEC 60335-2-69

Rau

Διπλ. Μηχ. Α. Rau
Υπεύθυνος ερευνητικού τμήματος

Bellenberg, 23.06.1999



EF-konformitetserklæring

Wap Reinigungssysteme GmbH & Co.
Guido-Oberdorfer-Straße 2-8
D-89287 Bellenberg

Produkt: Suger

Type: SB Station, SB Station Marathon
SB Tandem, SB Tandem Marathon

Beskrivelse: 230 V~, 50 Hz

Apparatets konstruksjonstype er i samsvar med følgende gjeldende bestemmelser: SQ 450, SQ 550, SQ 650, SQ 651

Anvendte harmoniserte standarder: EF-maskindirektiv 98/37/EEC
EF-lavspændingsdirektiv 73/23/EEC
EF-direktiv elektromagnetisk kompatibilitet 89/336/EEC

Anvendte nasjonale standarder og tekniske spesifikasjoner: EN 292
EN 60335-1, 60335-1 A6
EN 60335-2-69
EN 55014-1, EN 55014-2, EN 61000-3-2

Rau

ppa. Rau, Dipl. Ing. (FH)
Leder forskning og utvikling

Bellenberg, 23.06.1999



EG-försäkran om överensstämmelse

Wap Reinigungssysteme GmbH & Co.
Guido-Oberdorfer-Straße 2-8
D-89287 Bellenberg

Produkt: Dammsugare

Type: SB Station, SB Station Marathon
SB Tandem, SB Tandem Marathon

Beskrivning: 230 V~, 50 Hz

Apparatens konstruktion motsvarar följande tillämpliga bestämmelser: EG-maskindirektiv 98/37/EG
EG-lågspänningsdirektiv 73/23/EG
EG-direktiv EMK 89/336/EG

Tillämpade harmoniserade normer: EN 292
EN 60335-1, 60335-1 A6
EN 60335-2-69
EN 55014-1, EN 55014-2, EN 61000-3-2

Tillämpade nationella normer och tekniska specifikationer: DIN EN 60335-1
IEC 60335-2-69

Rau

ppa. Rau, Dipl. Ing. (FH)
Ledare för forskning och utveckling

Bellenberg, 23.06.1999



EF-overensstemmelsesattest

Wap Reinigungssysteme GmbH & Co.
Guido-Oberdorfer-Straße 2-8
D-89287 Bellenberg

Produkt: Suger

Type: SB Station, SB Station Marathon
SB Tandem, SB Tandem Marathon

Beskrivelse: 230 V~, 50 Hz

Konstruktionen af dette apparat opfylder følgende gældende bestemmelser: EF-maskindirektiv 98/37/EØF
EF-lavspændingsdirektiv 73/23/EØF
EF-direktiv vedr. elektromagnetisk fordragelighed 89/336/EØF

Anvendte harmoniserede standarder: EN 292
EN 60335-1, 60335-1 A6
EN 60335-2-69
EN 55014-1, EN 55014-2, EN 61000-3-2

Anvendte tyske standarder og tekniske specifikationer: DIN EN 60335-1
IEC 60335-2-69

Rau

ppa. Rau, Dipl. Ing. (FH)
Leder forskning og udvikling

Bellenberg, 23.06.1999



EY-Vaatumustenmukaisuusvakuutus

Wap Reinigungssysteme GmbH & Co.
Guido-Oberdorfer-Straße 2-8
D-89287 Bellenberg

Tuote: SB SaugStation

Tyyppi: SB Station, SB Station Marathon
SB Tandem, SB Tandem Marathon

Kuvaus: 230 V~, 50 Hz

Tämän laitteen rakenne vastaa seuraavia määräyksiä: EY-koneidirektiivi 98/37/EG
EY-pienjännittdirektiivi 73/23/EG
EY-direktiivi EMV 89/336/EG

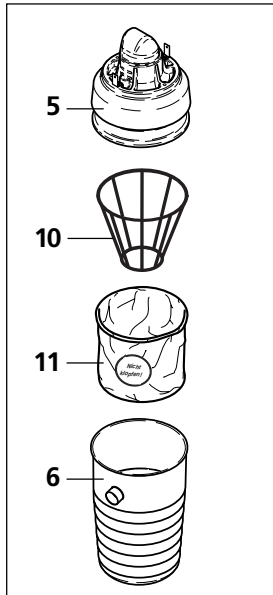
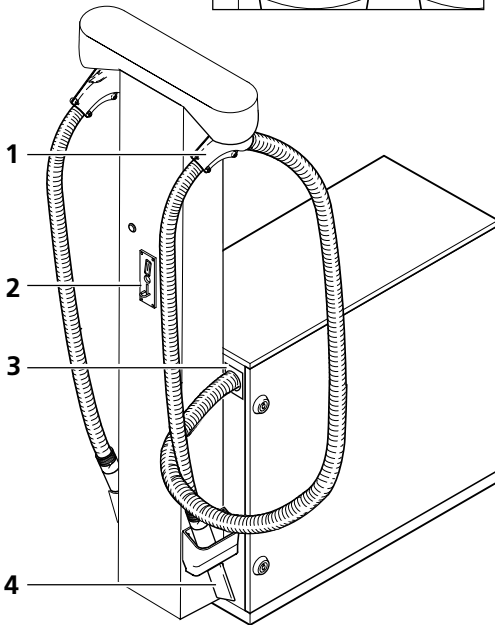
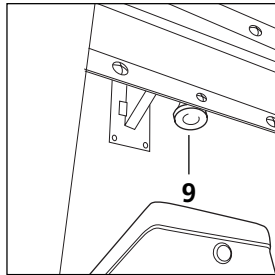
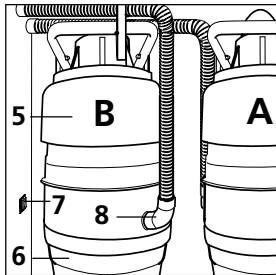
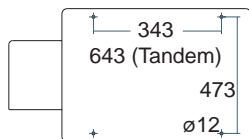
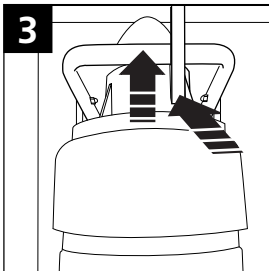
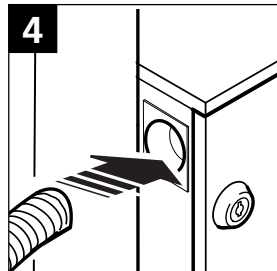
Käytetyt harmonisoidut normit: EN 292
EN 60335-1, 60335-1 A6
EN 60335-2-69
EN 55014-1, EN 55014-2, EN 61000-3-2

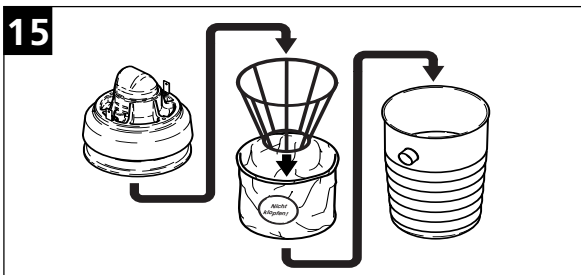
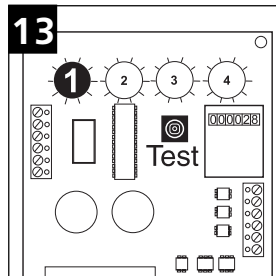
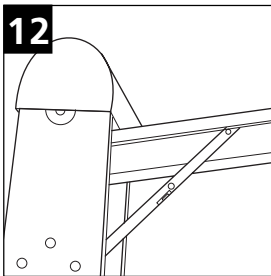
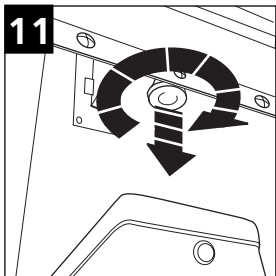
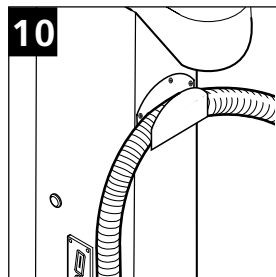
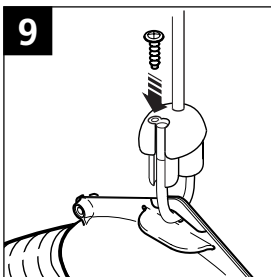
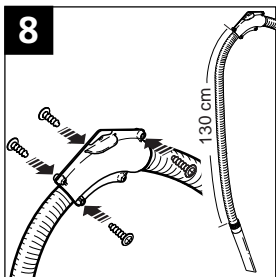
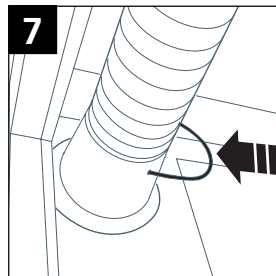
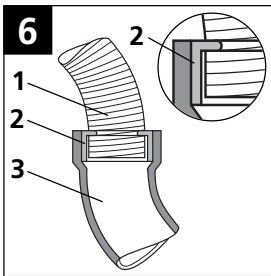
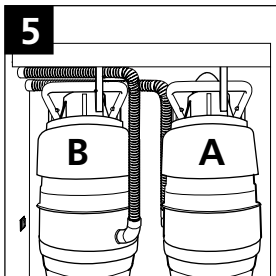
Käytetyt kansalliset normit ja tekniset spesifikaatiot: DIN EN 60335-1
IEC 60335-2-69

Rau

ppa. Rau, Dipl. Ing. (FH)
Kehtys- ja tutkimusjohtaja

Bellenberg, 23.06.1999

1**2****3****4**



GB

READ THE OPERATING INSTRUCTIONS AND OBSERVE THE SAFETY NOTES!

INTENDED USE

The SB Station is a self-service vacuum cleaner suitable for picking up dry, non-flammable dusts normally encountered when cleaning the inside of motor vehicles. Liquids and health-endangering dusts must not be picked up.

DESCRIPTION (FIG. 1)

- 1 Hose retractor
- 2 Coin verifier
- 3 Suction hose fitting
- 4 Crevice nozzle
- 5 Suction unit
- 6 Dirt tank
- 7 Main switch
- 8 Adapter ring
- 9 Lock for coin verifier slot
- 10 Distance basket
- 11 Cloth insert filter

SETTING UP THE STATION

- Release the SB Station from the pallet.
NOTE!
Do not throw the packaging carton away. The drilling

pattern for mounting the SB Station is printed on the carton. (Fig. 2)

- Open the door.
- Take the suction hoses out of the housing.
- Lift the suction unit with the brackets and secure in place. (Fig. 3).
- Take out the dirt tank and the accessories in the tank.
- Mount the SB Station in the intended position using the installation materials supplied.

NOTE!

Ensure that the SB Station is mounted on flat, level ground.

If necessary:

- Level using shims!
- Check that the door opens and closes easily!

Have the electrical connection made by a qualified electrician:

- Lay the lead (above 15 m, use lead with 2.5 mm² cross-section) along the bottom of the SB Station. Lay the lead into the terminal box and connect as shown in the circuit diagram.

FITTING THE SUCTION HOSES

SB Station and SB Station Marathon:

- Insert the suction hose from the outside through the hose opening (approx. 80 cm, measured from the inner edge of the hose opening to the end of the suction hose). (Fig. 4)

SB Tandem and SB Tandem Marathon:

First fit the suction hose for cleaner A (**Fig. 5**).

- Insert the suction hose from the outside through the hose opening. For
 - Cleaner A approx. 80 cm
 - Cleaner B approx. 80 cm
 measured from the inner edge of the hose opening to the end of the suction hose. (Fig. 4)

FITTING THE CONNECTING ELBOW, HOSE HOLDER AND CREVICE NOZZLE

- Fit the adapter ring (Fig. 1, No. 8) over the connection on the dirt tank.

NOTE!

The connecting elbow opening should point upwards. (Fig. 5)

- Screw adapter fitting (Fig. 6, Item 2) approx. 35 mm onto suction hose (Fig. 6, Item 1). Plug adapter fitting with suction hose into connecting elbow (Fig. 6, Item 3).

NOTE!

Push the suction hose into the housing only far enough that the suction unit can still swing freely when the suction hose is connected. This is important so that the suction unit fits air-tight onto the dirt tank when lowered.

- Secure the suction hose with the metal bracket. (Fig. 7).
- Secure the hose bracket to the suction hose approx. 1.30 m

from the end of the hose. (Fig. 8).

- Remove screw from clamping piece and detach rope end. Guide the rope through the eye at the hose holder. Hook up rope end to clamping piece and secure with screw. (Fig. 9).
- Screw the crevice nozzle onto the end of the hose (left-hand thread).

OPTIONAL ACCESSORIES

Hose holder

It is also possible to operate the SB Station without the hose retractor. Secure the hose holder to the existing bores with screws.

After work, the hose is simply placed into the hose holder. (Fig. 10).

Art. No. 43064

CAUTION!

Either the hose holder or the hose bracket should be installed as otherwise the suction hose handling is restricted.

Electronic coin tester

Allows the SB Station to be operated with different coins.

On request.



STARTING OPERATION

- Place the dirt tank into the station and lower the suction unit.
- Fit the suction hose with the adapter ring over the connection of the dirt tank.

Open the cover for the coin tester tube:

- Pull the knob and turn through 90° - the cover can now be opened (Fig. 11).
- Pull up the cover until it is horizontal and secure with the flap holder (Fig. 12).
- Set the desired running time per coin at rotary **knob 1** of the timer. (Fig. 13):
1 = 1 minute
10 = 10 minutes
(Rotary knobs 2-4 are required only with electronic coin tester)

Close the cover for the coin tester tube:

- Push down the cover and turn the knob through 90° - the latching pin engages.

(Continued -->)

GB

It is possible to secure access to the coin box with a padlock (not included in the scope of supply) (Fig. 14).

- Turn the main switch to position 'I'. (Fig. 1, item 9)

To check the function, the suction turbine starts briefly. If the turbine does not start, remedy the cause --> See section "Troubleshooting".

THE FOLLOWING FUNCTIONS ARE ACTIVE WHEN THE STATION IS SWITCHED ON

SB-Station SB-Station Marathon

- Insert a coin
- The pulse counter counts the number of coins inserted
- At the end of the preset time, the suction turbine switches off
- Manual test function: Pressing the button 'Test' (Fig. 13) on the timer pcb switches on the suction turbine briefly.

SB-Tandem SB-TandemMarathon

- Insert a coin
- The push-buttons on the column start to flash.
- Select the left-hand or right-hand hose by pressing the corresponding button.
- The push-button of the selected side now lights up continuously and the suction turbine starts to run.
- The pulse counter counts the number of coins inserted
- At the end of the preset time, the

suction turbine switches off

- Manual test function: Pressing the button 'Test' (Fig. 13) on the timer pcb switches on the suction turbines briefly.

SWITCHING OFF

- Turn the main switch on the inside of the column to position '0'.

MAINTENANCE

- Weekly / when necessary:

Cleaning and changing the cloth insert filter (Fig. 15)

- Turn the main switch to position „0“.
- Before emptying the dirt tank, hit it gently with the palm of your hand so that dirt drops from the cloth insert filter into the dirt tank.
- Lift the suction unit with the bracket and secure it (Fig. 3).
- Remove suction hose with adapter ring from the connection of the dirt tank.
- Remove the dirt tank.
- Remove the distance basket.
- Remove the cloth insert filter, brush it

with a soft brush and check that it is not damaged.

NOTE:

The cloth insert filter can also be cleaned by dipping it in a slightly soapy solution at 30°C. Be careful not to damage the surface of the cloth insert filter and allow it to dry thoroughly after washing it.

- If necessary, replace a damaged cloth insert filter with a new one. Dispose of damaged cloth insert filter according to regulations.
- Insert cloth insert filter in the dirt tank in such a way that the „Do not hit“ label is in front of the suction opening of the dirt tank.
- Insert the distance basket in the cloth insert filter.
- Lower the suction unit.

NOTE:

Ensure that the wire ring of the cloth insert filter is pulled over the edge of the dirt tank and that the dirt tank is fitted air-tight on to the suction unit.

Cleaning the coin tester

To ensure trouble-free functioning of the coin tester, the coin slot should be cleaned at regular intervals with a cloth soaked in white spirit.

IMPORTANT!

Never oil the coin tester!

For re-orders:

Cloth insert filter

Art. No. 34106

SPARE PARTS

Suction hose complete

Art. No. 64084

Crevice nozzle

Art. No. 64386

GUARANTEE

Our general terms and conditions apply to the guarantee and warranty.

Changes in line with technical innovation reserved.

TROUBLESHOOTING

Fault	Cause	Remedy
‡ Cleaner does not start	<ul style="list-style-type: none"> > Fuse or r.c.c.b of the power supply tripped > Coin tester soiled or defective > Suction turbine, push-button or timer defective 	<ul style="list-style-type: none"> • Replace fuse or reset r.c.c.b • Clean or replace coin tester • Call Service
‡ Reduced suction power	<ul style="list-style-type: none"> > Suction hose clogged > Cloth insert filter soiled > Dirt tank full 	<ul style="list-style-type: none"> • Clean suction hose • See section "Clean/replace cloth insert filter" • Empty dirt tank
‡ Hose retractor defective	<ul style="list-style-type: none"> > Retractor line broken 	<ul style="list-style-type: none"> • Call Service

		SB-Station SB Station Marathon	SB-Tandem SB Tandem Marathon
Voltage	V/Hz	230/50-60Hz	230/50-60Hz
Power consumption, max.	W	1400 1200 (Marathon)	2800 (Tandem) 2400 (Tandem GB,CH) 2000 (Tandem DK) 2400 (Tandem Marathon)
Fuse	A	16 13 (GB,CH) 10 (DK)	16 13 (GB,CH) 10 (DK)
Volumetric flow (air), max..	l/min.	4000 4200 (Marathon)	2 x 4000 (Tandem) 2 x 3600 (Tandem GB,CH) 2 x 3000 (Tandem DK) 2 x 4200 (Tandem Marathon)
Vacuum, max.	Pa	23500 25000 (Marathon)	23500 25000 (Marathon)
Sound level 1 m from the Station	dB(A)	75	75
Protection class		I	I
Type of protection		IP X4	IP X4
Interference suppression level		N	N
Suction hose - length	m	5	2 x 5
- diameter	mm	50	50
Tank volume	l	30	2 x 30
Depth	m	0.83	1.19
Width	m	0.55	0.55
Height	m	2.04	2.04
Weight, complete	kg	90	115



INTERNET
http://www.alto-online.com

ALTO HEADQUARTERS

Incentive International A/S
Kongens Nytorv 28
P.O.Box 2064
1013 Copenhagen K
Tel.: +45 33 11 11 42
Fax: +45 33 93 46 36
E-mail: incentive@incentive-dk.com

SUBSIDIARIES

AUSTRALIA

ALTO Overseas Inc.
1B/8 Resolution Drive
P.O.Box 797
Caringbah, N.S.W. 2229
Tel.: +61 2 95 24 61 22
Fax: +61 2 95 24 52 56

AUSTRIA

ALTO Österreich GmbH
Metzgerstr. 68
5101 Bergheim/Salzburg
Tel.: +43 6624 5 64 00-14
Fax: +43 6624 5 64 00-55
E-mail: wap@salzburg.co.at

BRASIL

Wap do Brasil Ltda.
Rua 25 de Agosto, 608
83323-260 Pinhais/Paraná
Tel.: +55 4 16 67 40 26
Fax: +55 4 16 67 47 99
E-mail: wap@wapltda.com.br

CANADA

ALTO Canada
24 Constellation Road
Rexdale
Ontario M9W 1K1
Tel.: +1 41 66 75 58 30
Fax: +1 41 66 75 69 89

CROATIA

Wap ALTO Strojvi za čišćenje, d.o.o.
Siget 18a
10020 Zagreb
Tel.: +385 16 55 41 44
Fax: +385 16 55 41 12

CZECH REPUBLIC

ALTO Česká Republika s.r.o.
Zateckých 9
14000 Praha 4
Tel.: +420 2 41 40 84 19
Fax: +420 2 41 40 84 39
E-mail: wap_p@mbox.vol.cz
Web: www.wap-alto.cz

DENMARK

ALTO Danmark A/S
Industrikvarteret
9560 Hadsund
Tel.: +45 72 18 21 00
Fax: +45 72 18 21 05
E-mail: service@alto-dk.com

ALTO Danmark A/S (food division)
Blytækkervej 2
9000 Aalborg
Tel.: +45 72 18 21 00
Fax: +45 72 18 20 99
E-mail: scanio.technology@alto-dk.com

FRANCE

ALTO France S.A.
B.P. 44, 4 Place d'Ostwald
67036 Strasbourg Cedex 2
Tel.: +33 3 88 28 84 00
Fax: +33 3 88 30 05 00
E-mail: info@alto-fr.com

GERMANY

Wap ALTO Group
ALTO Deutschland GmbH
Guido-Oberdorfer-Straße 2-8
89287 Bellenberg
Tel.: +49 0180 5 37 37 37
Fax: +49 0180 5 37 37 38
E-mail: info@wap-online.de

GREAT BRITAIN

ALTO Cleaning Systems
(UK) Ltd.
Bowerbank Way
Gilwilly Industrial Estate, Penrith
Cumbria CA11 9BN
Tel.: +44 1 7 68 86 89 95
Fax: +44 1 7 68 86 47 13
E-mail: sales@alto-uk.com

HONG KONG

ALTO Hong Kong
RM 602, Tower B,
Regent Ctr.
70, Ta Chuen Ping Street
Kwai Chung
Hong Kong
Tel.: +852 26 10 10 42
Fax: +852 26 10 10 47
E-mail: waphk@netvigador.com

JAPAN

ALTO Danmark A/S Japan
Representative Office
Naruse-build 4F
7-2 Shinbashi 1-Chome, Minato-Ku
J-Tokyo 105-004
Tel.: +81 3 35 69 38 07
Fax: +81 3 35 69 38 08
E-mail: alto-jpn@nifty.com

NETHERLANDS

Wap ALTO Nederland B.V.
Postbus 65
3370 AB Hardinxveld-
Giessendam
Tel.: +31 18 46 67 72 00
Fax +31 18 46 67 72 01
E-mail: info@alto-nl.com

NORWAY

ALTO Norge A/S
Bjørnerudveien 24
1266 Oslo
Tel.: +47 22 75 17 70
Fax: +47 22 75 17 71
E-mail: info@alto-no.com

SINGAPORE

ALTO DEN-SIN Singapore Pte Ltd.
No. 17 Link Road
Singapore 619034
Tel.: +65 2 68 10 06
Fax: +65 2 68 49 16
E-mail: densin@singnet.com.sg
Web: www.densin.com

SLOVENIA

Wap čistilni sistemi, d.o.o.
Letališka 33
SLO-1110 Ljubljana
Tel.: +368 15 24 23 06
Fax: +368 15 40 42 94
E-mail: wap.prodaja@siol.com

SLOWAKIA

Wap čistiace systémy spol. s.r.o.
Vajnorská 135
83237 Bratislava
Tel.: +421 7 44 25 96 64
Fax: +421 7 44 25 79 44
E-mail: wap@gtinet.sk
Web: www.wap-alto.sk

SPAIN

ALTO Iberica S.L.
Calle de la Majada No. 4
28760 Tres Cantos - Madrid
Tel.: +34 91 0 04 62 56
Fax: +34 91 8 04 64 63
E-mail: info@alto-es.com

SWEDEN

ALTO Sverige AB
Aminogatan 18
S-431 04 Mölndal
Tel.: +46 3 17 06 73 00
Fax: +46 3 17 06 73 41
E-mail: info@alto-se.com

SWITZERLAND

ALTO Schweiz AG
Allmendstr. 14
5612 Villmergen
Tel.: +41 56 618 85 00
Fax: +41 56 618 85 10
E-mail: info@alto-ch.com

USA

ALTO U.S.Inc
16253 Swingley Ridge Road
Suite 200
Chesterfield, MO 63017-1544
Tel.: +1 63 65 30 08 71
Fax: +1 63 65 30 08 72
E-mail: info@alto-us.com

ALTO U.S.Inc
2100 Highway 265
Springdale, Arkansas 72764
Tel.: +1 50 17 50 10 00
Fax: +1 50 17 56 07 19
E-mail: info@alto-us.com

ALTO U.S.Inc
1100 Haskins Road
Bowling Green, Ohio 43402
Tel.: +1 41 93 52 75 11
Fax: +1 41 93 53 71 87
E-mail: info@alto-us.com